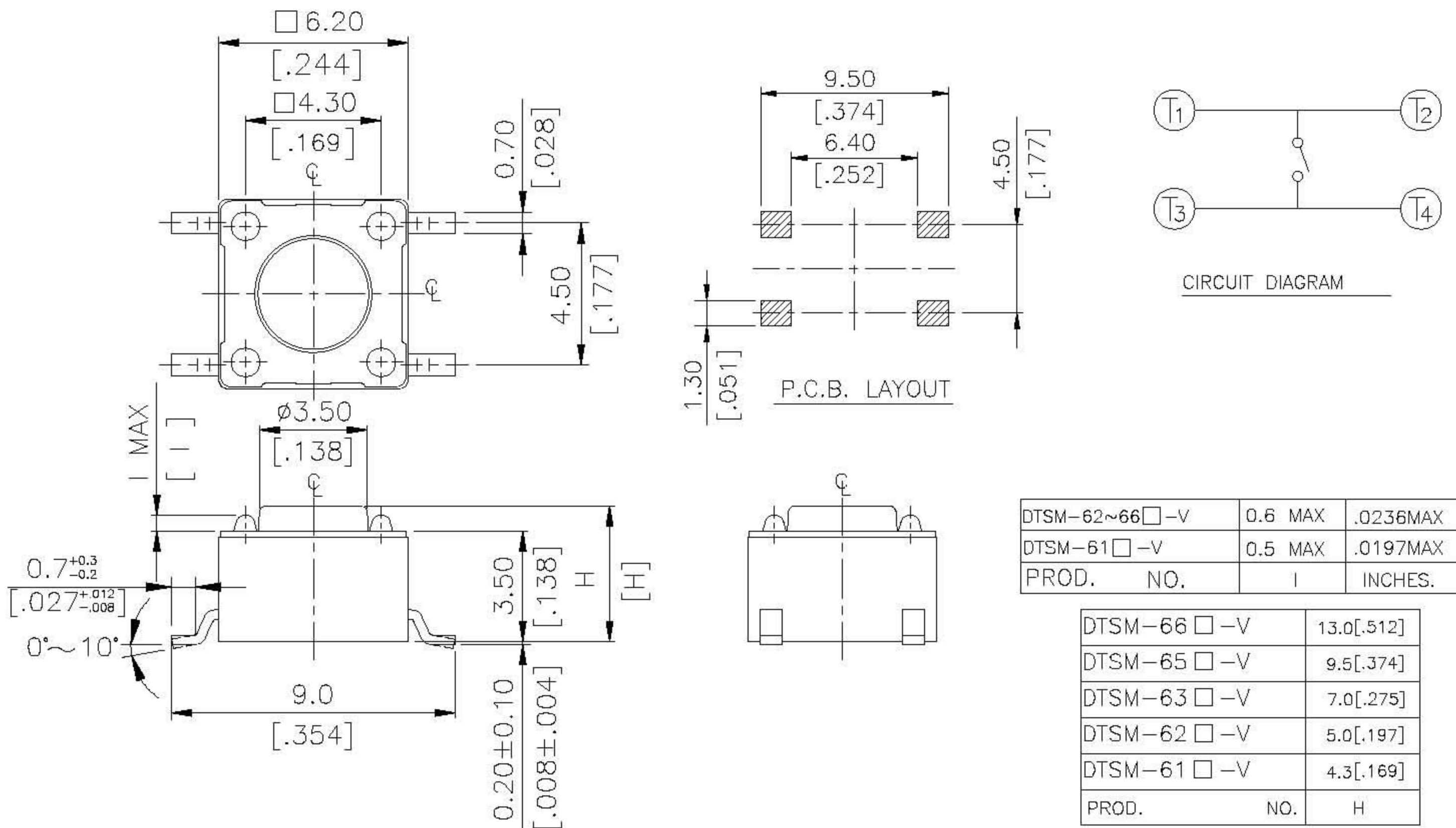


# DTSM(G)-6(2) SERIES



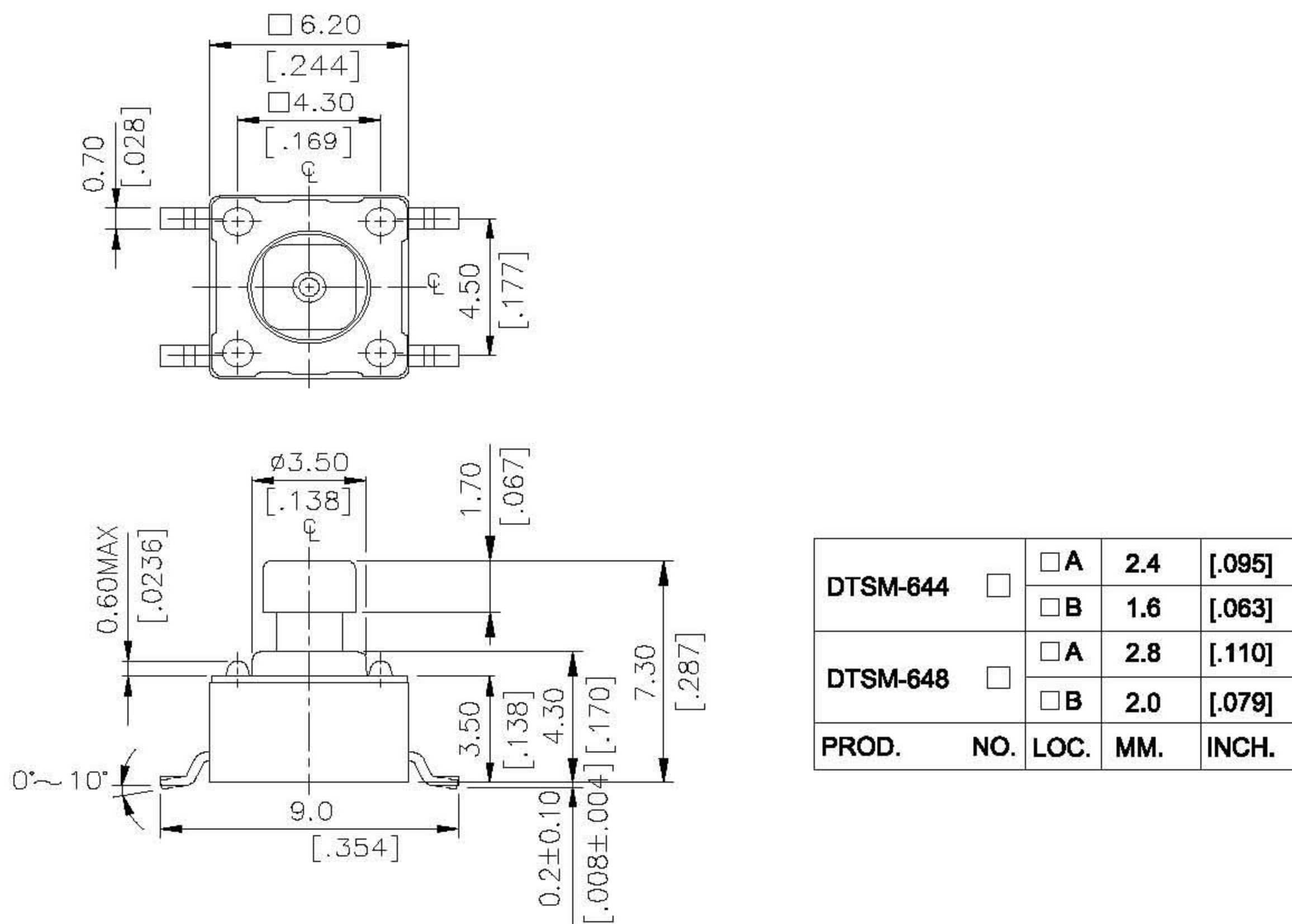
## DIMENSIONS

### DTSM-6



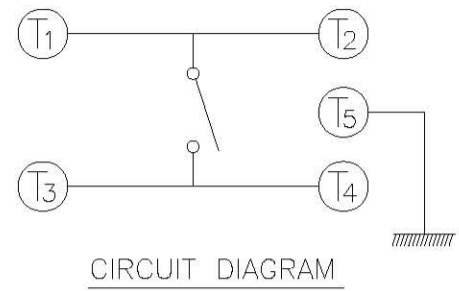
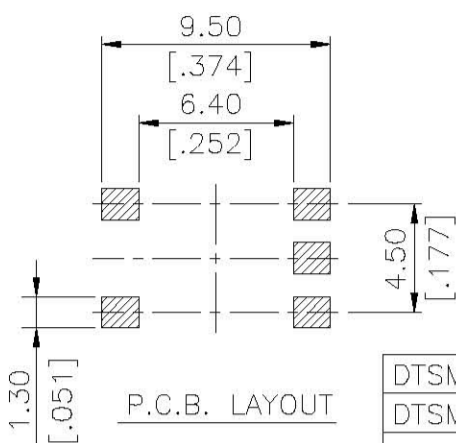
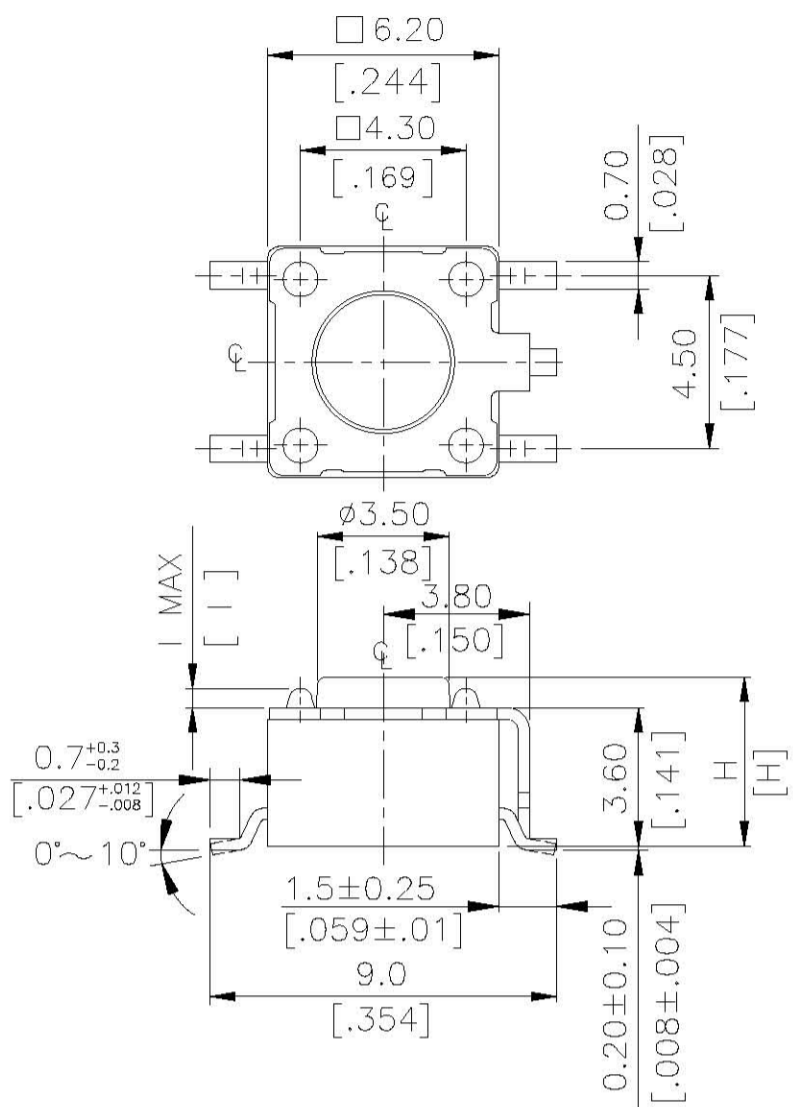
General Tolerance : ±0.2mm

### DTSM-64



General Tolerance : ±0.2mm

DTSMG-6

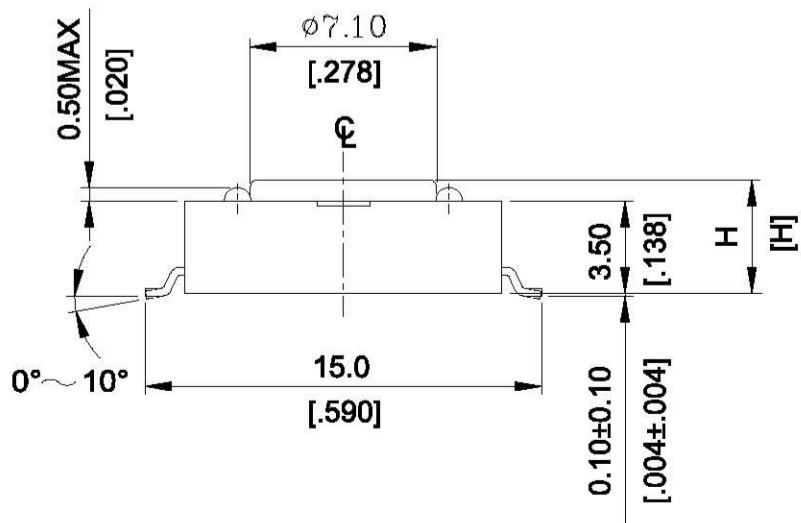
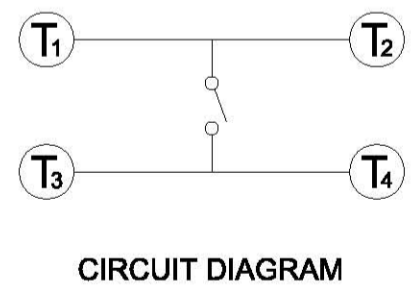
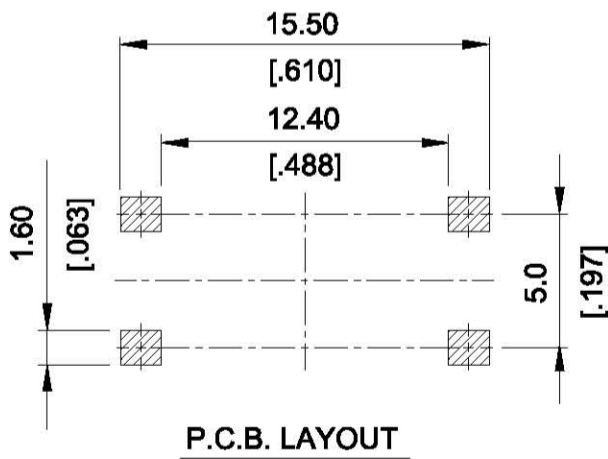
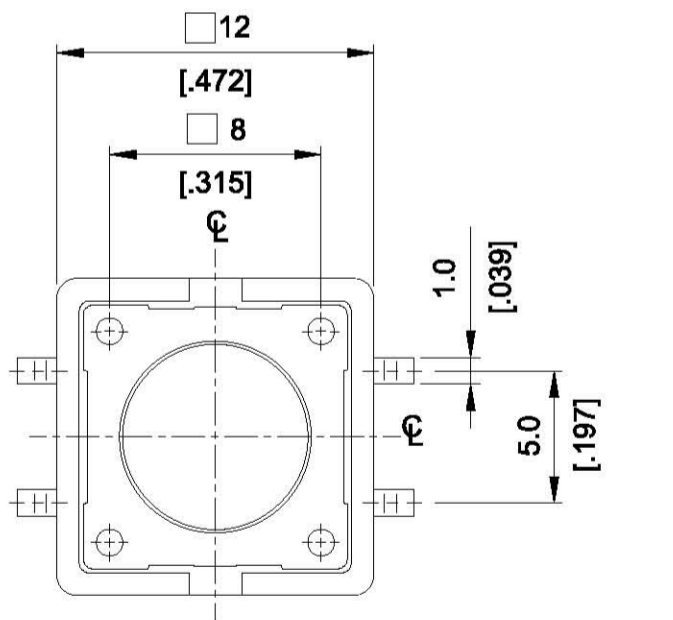


DTSMG-62~66□-V	0.5 MAX	.02MAX
DTSMG-61□-V	0.4 MAX	.016MAX
PROD. NO.	I	INCHES.

DTSMG- 6 6 □ -V	13.0 [0.512]
DTSMG- 6 5 □ -V	9.5 [0.374]
DTSMG- 6 3 □ -V	7.0 [0.275]
DTSMG- 6 2 □ -V	5.0 [0.197]
DTSMG- 6 1 □ -V	4.3 [0.169]
PROD. NO.	H

General Tolerance : ±0.2mm

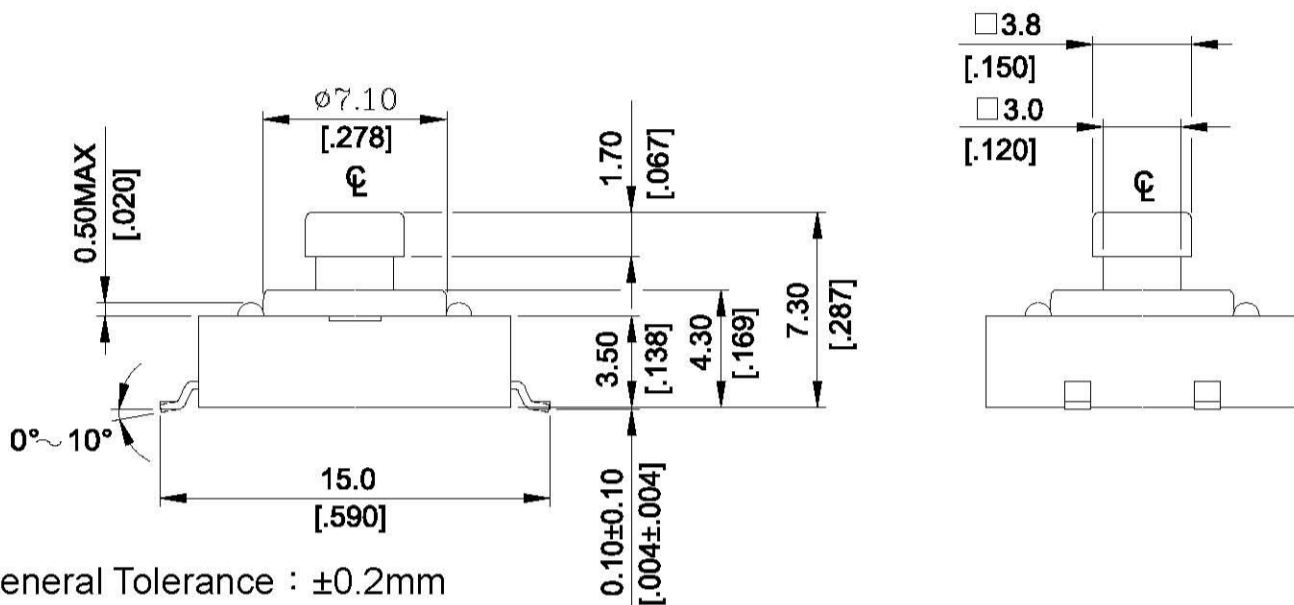
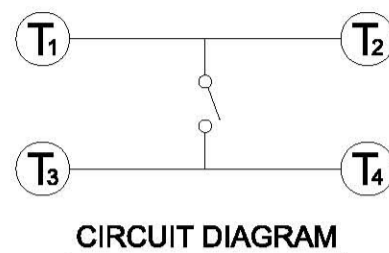
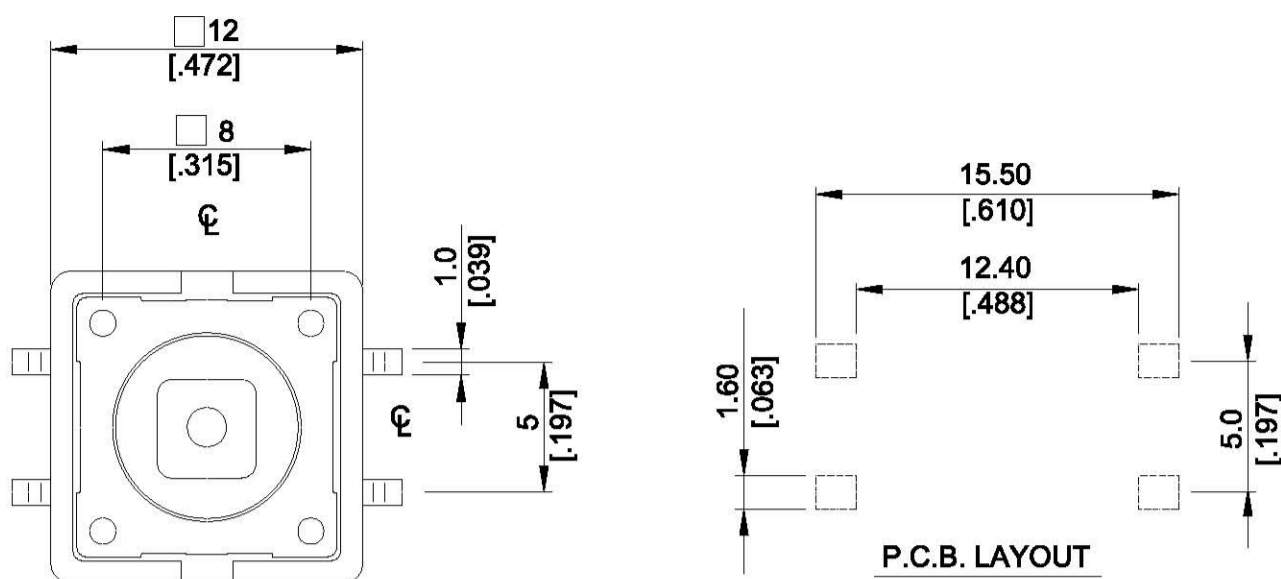
DTSM-2



DTSM-25	8.5 [0.335]
DTSM-21	4.6 [0.169]
PART NO	H

General Tolerance : ±0.2mm

DTSM-24



General Tolerance : ±0.2mm

**HOW TO ORDER**

DTSM □ - □ - □ - □ - □ - □

Package style :  
 B=Tube  
 T/R=Tape&Reel <▲ Except DTSM-66>

Soldering :  
 V=Lead Free Solderable

□=Phosphor Bronze Dome  
 S= Stainless Steel Dome  
 Color Of Stem For Operating Force :  
 K=Black,100gf  
 N=Brown,160gf  
 R=Red,260gf  
 S=Salmon,320gf  
 Y=Yellow,520gf

Dimension H :  
 1=4.3mm  
 2=5.0mm  
 3=7.0mm  
 44=7.3mm(SQ)X2.4mm  
 48=7.3mm(SQ)X2.8mm  
 5=9.5mm  
 6=13mm

Prod Size :  
 6=6X6mm

□=Without Ground Terminal  
 G=With Ground Terminal

Surface-Mourting Type Tactile Switch  
 (Non-Washable)

DTSM - □ □ □ - □ - □

Package Style :

B = Tube

T/R = Tape & Reel

Soldering :

V = Lead Free Solderable

Color Of Stem For Operating Force :

N = Brown,160gf

R = Red,260gf

S = Salmon,320gf

Dimension H :

1 = 4.3mm

4 = 7.3mm(SQ)X3.8mm

5 = 8.5mm

Prod. Size :

2 = 12X12mm

Surface-Mounting Type Tactile Switch

<Non-Washable>

## **SPECIFICATION**

### **△MECHANICAL**

520 ± 130gf    Yellow (Y)  
320 ± 80gf    Salmon (S)  
Operation Force: 260 ± 50gf    Red (R)  
160 ± 50gf    Brown (N)  
100 ± 50gf    Black (K)

Stroke: (6x6) 0.25 +0.2mm / -0.1mm  
(12X12) 0.35 ±0.1mm

Operation Temperature: -25°C to +70°C

Storage Temperature: -30°C to +80°C

### **△ELECTRICAL(12x12)**

Electrical Life: 100,000 cycles for 320gf, 520gf  
100,000 cycles for 260gf  
200,000 cycles for 100gf, 160gf

### **△ELECTRICAL(6x6)**

Electrical Life: 1,000,000 cycles for 320gf, 520gf  
500,000 cycles for 260gf  
300,000 cycles for 100gf, 160gf

Rating: 50mA , 12VDC

Contact Resistance: 100mΩ max.

Insulation Resistance: 100MΩ min. at 500VDC

Dielectric Strength: 250VAC/ minute

Contact Arrangement: SPST

## **MATERIAL**

△COVER: Stainless Steel(for DTSM-6、2)  
Nickel Silver (for DTSMG-6)

△BASE: UL94V-0 Nylon High-Temp. Thermoplastic  
Color: Black (Standard)  
Color: Brown (V option)

△STEM: UL94V-0 Nylon High-Temp. Thermoplastic  
Color: Black (100gf), Brown (160gf)  
Red (260gf), Salmon (320gf)  
Yellow (520gf)

△CONTACT DISC: Phosphor Bronze with silver cladding  
(Standard)  
Stainless Steel(V option)

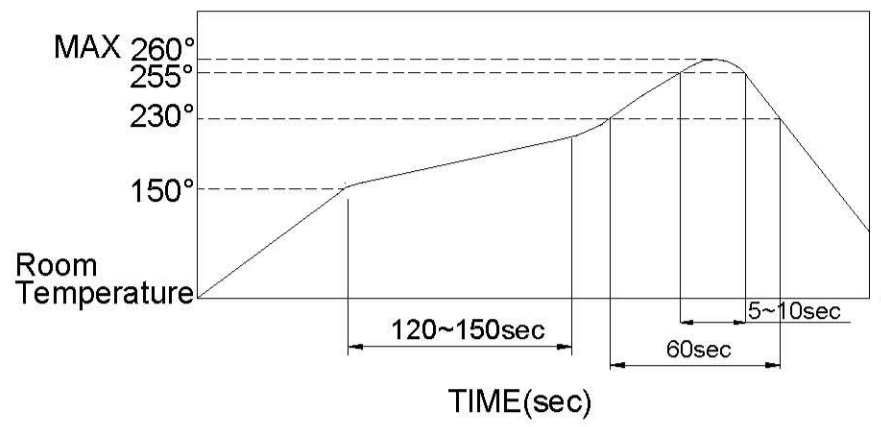
△TERMINAL: Brass with silver plated

# SOLDERING PROCESS

△HAND SOLDERING : Use a soldering iron of 30 watts, controlled at 350°C approximately 5 seconds while applying solder.

△REFLOW SOLDERING : When applying reflow soldering, the peak temperature or the reflow oven should be set to 260°C max.

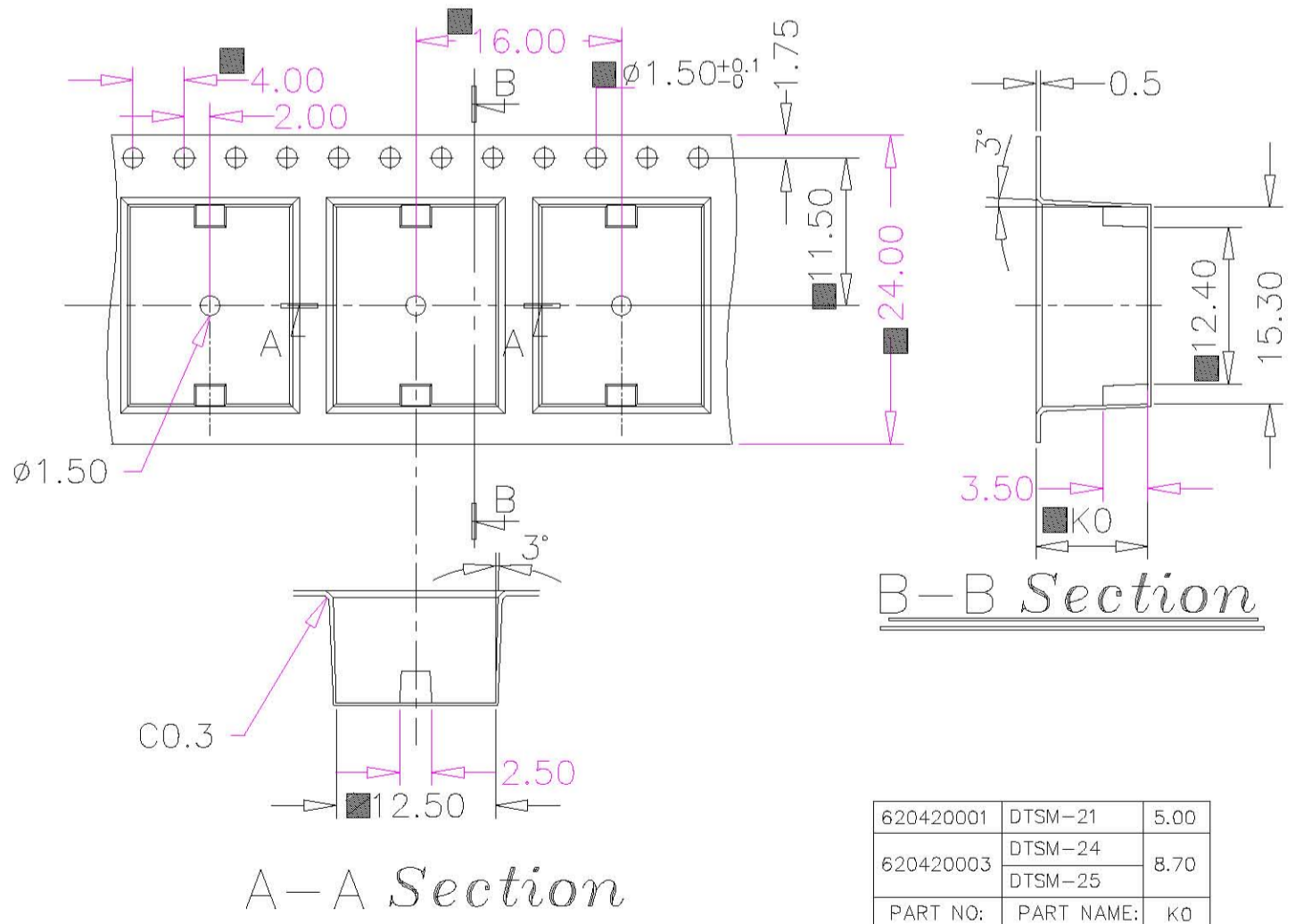
△ Temperature Profile:



# PACKING

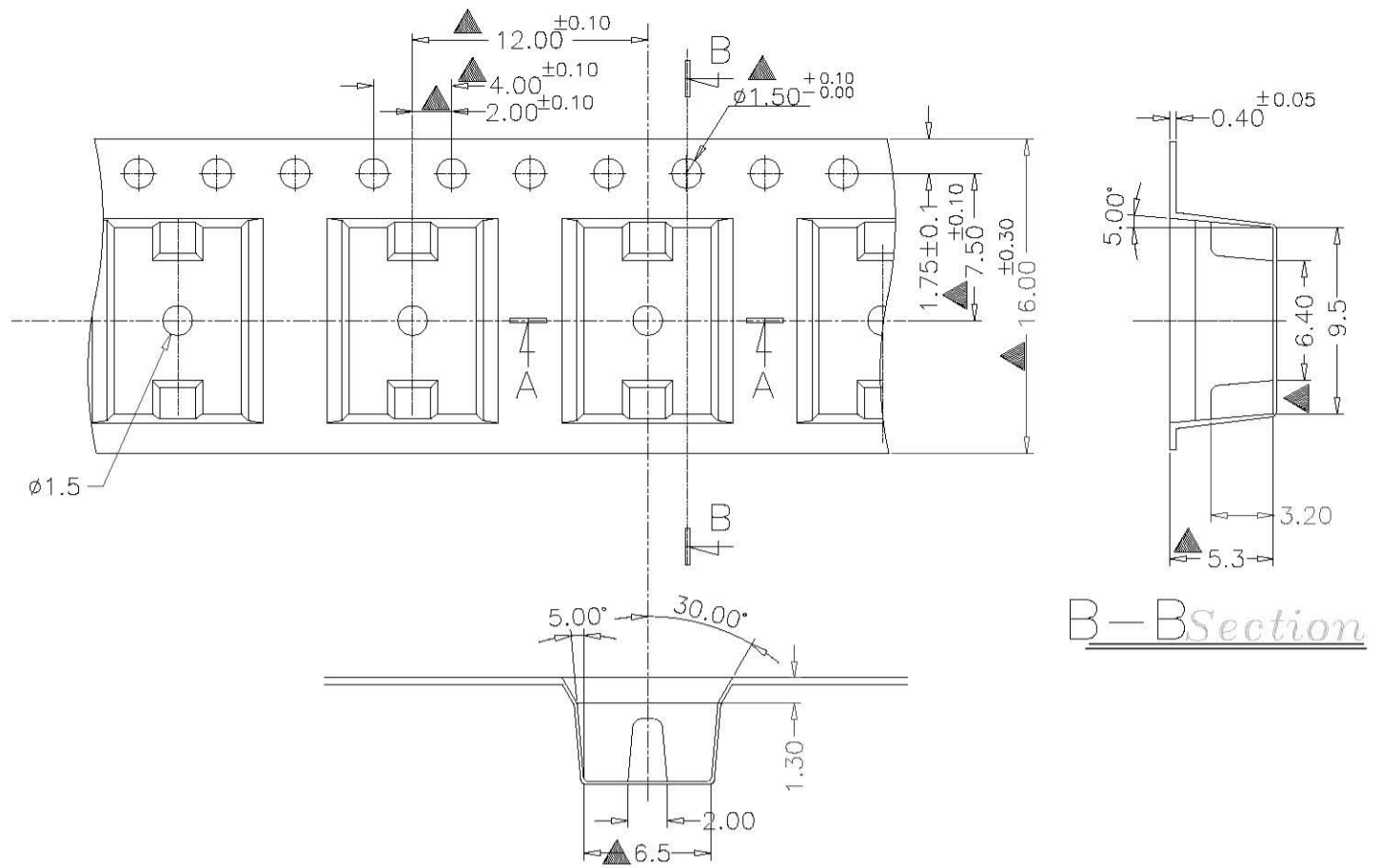
Part Number	Number Per Tube	Number Per Reel
DTSM-61	77	1000
DTSMG-61	-	1000
DTSM-62	77	900
DTSMG-62	-	1000
DTSM-63	77	700
DTSMG-63	-	500
DTSM-644(8)	77	500
DTSMG-644(8)	-	500
DTSM-65	77	380
DTSMG-65	-	380
DTSM-66	77	-
DTS(M)-21	40	700
DTS(M)-24	40	500
DTS(M)-25	40	400

# DTSM-2 REEL



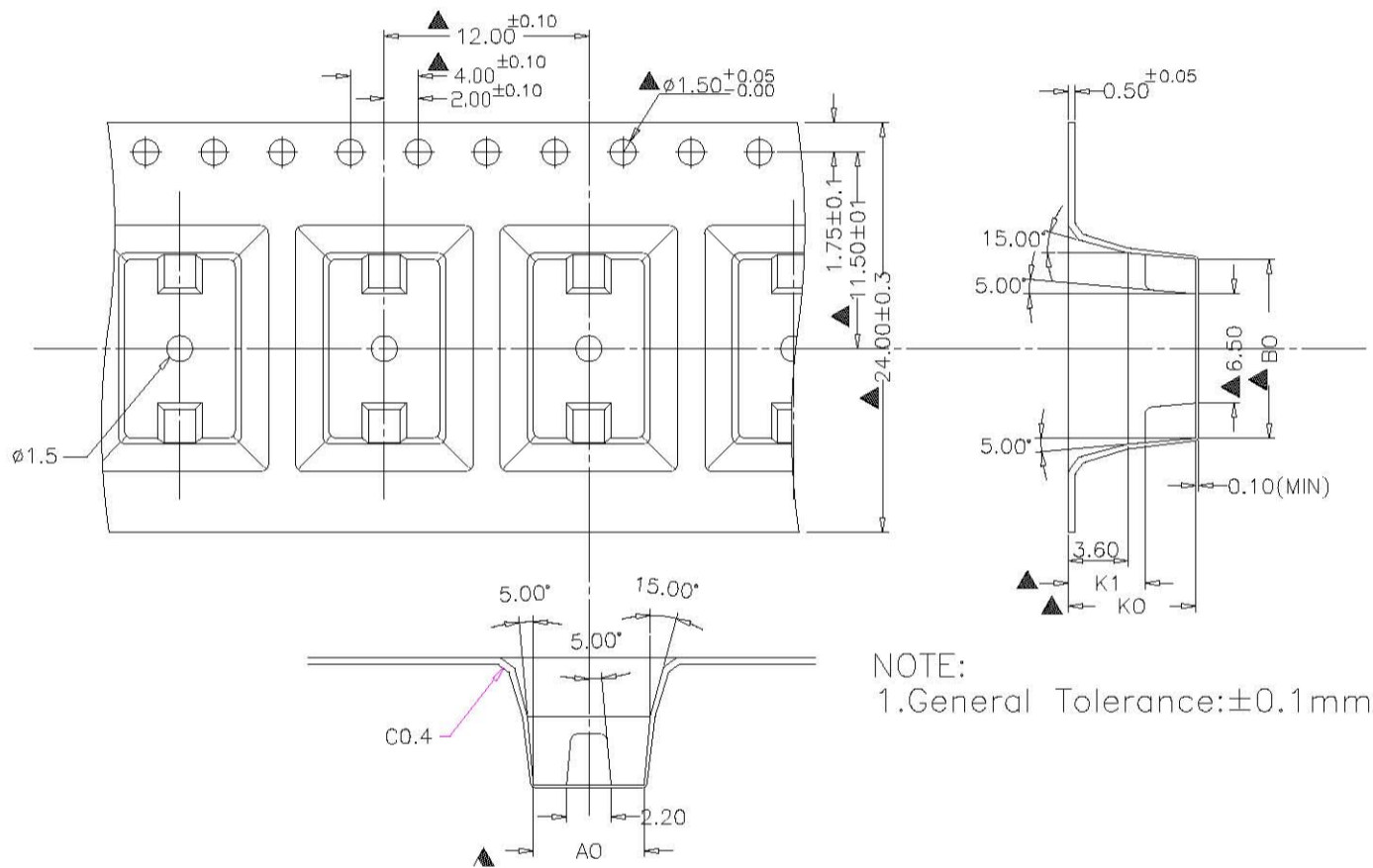
General Tolerance : ±0.1mm

**DTSM-61.62 REEL**



General Tolerance :  $\pm 0.1\text{mm}$

**DTSM-64 REEL**

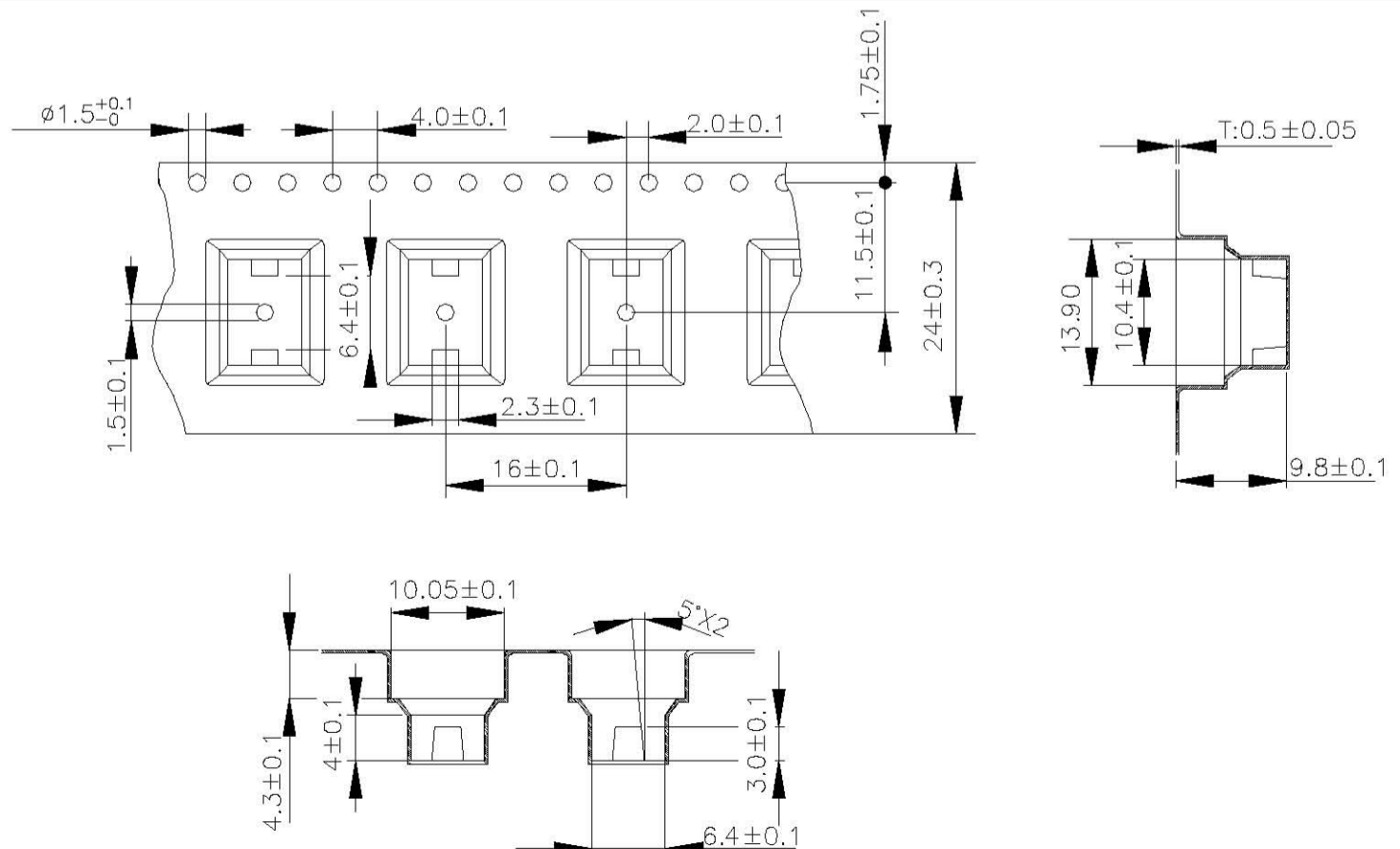


NOTE:  
1.General Tolerance: $\pm 0.1\text{mm}$

Ao	$6.50 \pm 0.10$
Bo	$10.00 \pm 0.10$
Ko	$7.60 \pm 0.10$
K1	$4.90 \pm 0.10$

General Tolerance :  $\pm 0.1\text{mm}$

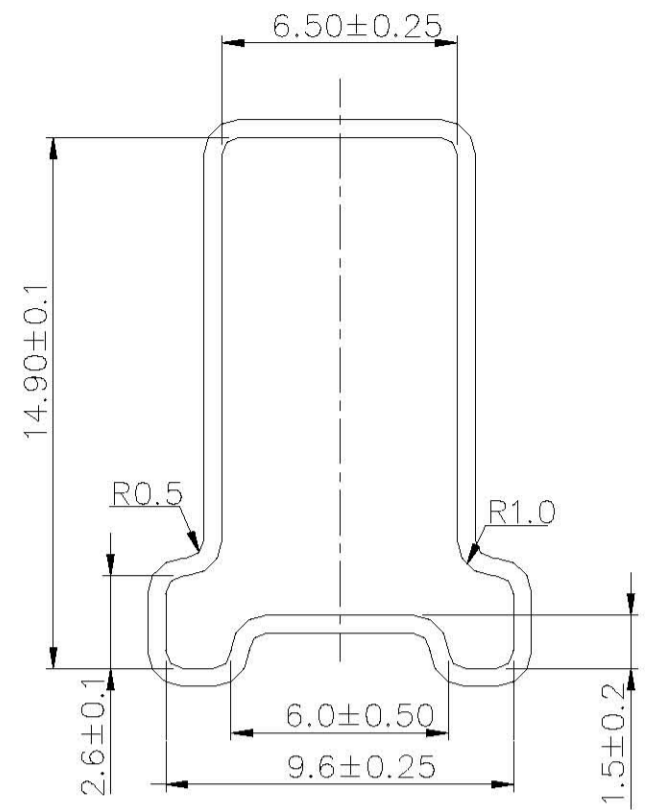
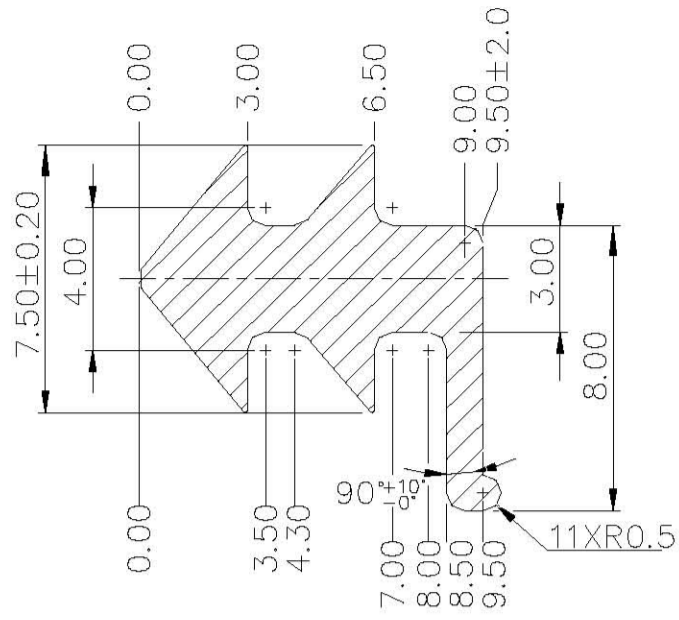
**DTSM-65 REEL**



General Tolerance :  $\pm 0.1\text{mm}$

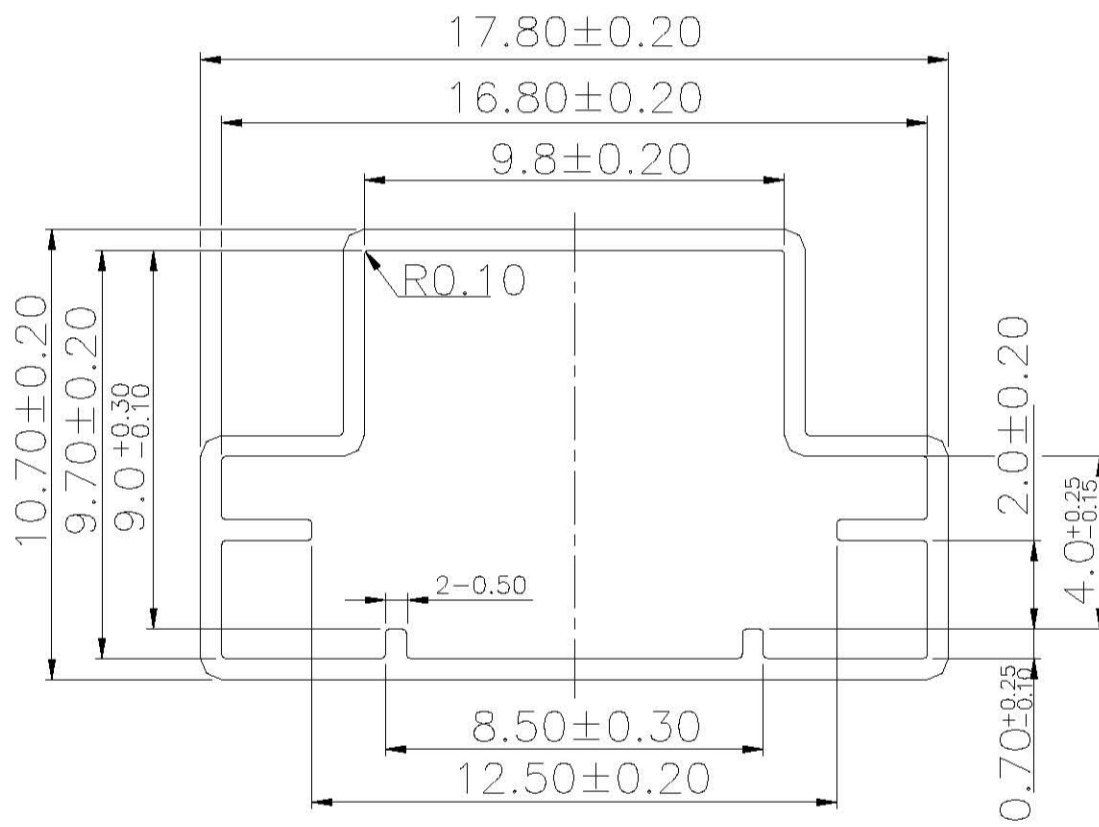


**DTSM-65.66 TUBE**



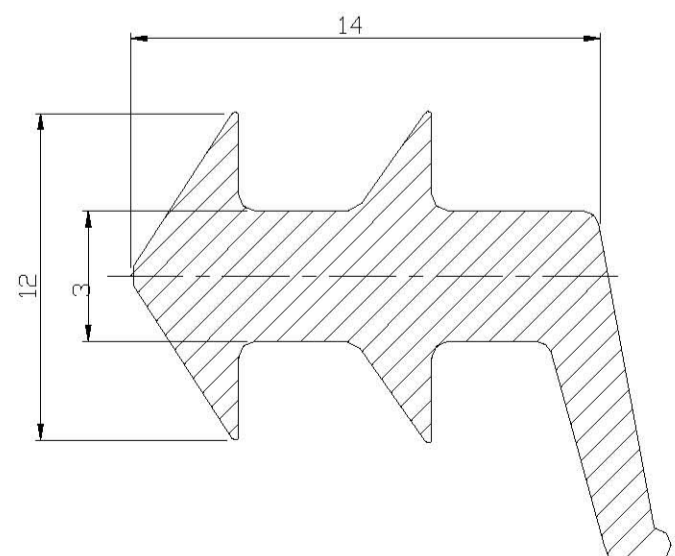
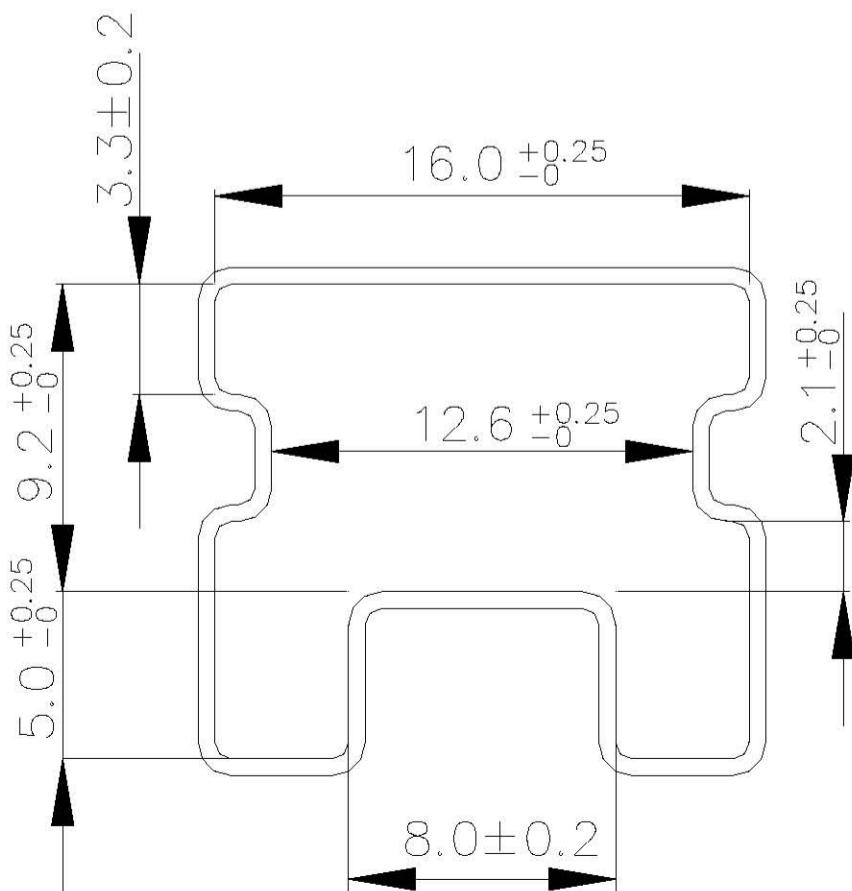
General Tolerance :  $\pm 0.2\text{mm}$

**DTSM-2 TUBE**



General Tolerance :  $\pm 0.2\text{mm}$

**DTS-2 TUBE**



General Tolerance :  $\pm 0.2\text{mm}$